

Premium List for the

Williamsburg Grange Community Fair

Since 1907



Saturday, September 9, 2023
Williamsburg Grange Hall
10 Main Street, Williamsburg, MA

Fair Exhibition and
Bake Sale Inside
11:00 – 6:00

Auction 6:45
Vegetables, Flowers, Baked goods and other Prizewinning Items

Crafts and Vendors on the Lawn
If you would like to rent a sale space please contact:
burgygrange@gmail.com



Premium List

WILLIAMSBURG GRANGE FAIR AND WILBUR M. PURRINGTON FLOWER SHOW

GENERAL INSTRUCTIONS AND RULES

- The Public is invited to exhibit. Choose categories from the list below that you would like to exhibit.
 - Follow the display instructions related to each category
- Bring your items to the Williamsburg Grange Hall on Friday September 8, 2023 between 5 - 9 PM.
 - Set up your displays
- All exhibits will be judged in the morning on Saturday September 9, 2023
- The exhibit hall will be open for viewing on Saturday September 9, 2023 from 11:00 AM until 6:00 PM
- You can pick up your items Saturday between 6-6:30 PM.
 - All items must remain in place until 6:00 PM.
 - You are invited to donate items to the Grange Fair Auction. (We thank you!) Any items left after 6:30 PM will go to the auction.
- All articles must be produced and/or prepared by the exhibitor since the last fair. The exhibitor must set up displays.
- Each exhibit must have an entry card complete with:
 - Name
 - Full address
 - Class name and number
 - Exhibits with entry cards missing information will not allow for delivery of prize money.
 - Please refer to the last page of this booklet for detailed instructions
- Mark all items not for sale in the auction – ‘NOT FOR SALE’.
- Children exhibitors are 13 years of age or under
 - Put the letter ‘C’ before the class number (ex: C100)
- Youth exhibitors are 14 to 18 years of age as of January 1st of the current year.
 - Put the letter ‘Y’ before the class number (ex: Y100)
- In the case of 4-H Club members or Junior Grangers, more than one entry per family will be allowed.
- Children’s classes will be judged on the Danish system. Stickers and prize money will be based on the excellence of the item, items will not be judged against one another.
- Only ONE entry per person per class.
- The Committee and Judges reserve the right to reject any and all exhibits that are not in the premium list, are of undesirable quality or do not follow the rules for that class. Please seek help when setting up if you are unsure.
- Awards will be made on the basis of quality and the Judge’s decision will be final.
- Read the rules given in the premium list.
 - Follow the premium list exactly.
 - Make out entry cards before coming to the fair.
 - If you have questions about the class, you can clarify when arriving for set up on Friday night.

All entries must remain in place until 6:00 p.m. If any exhibit is removed, all prizes and money will be forfeited.

The exhibits are open to the public from 11:00 a.m. until 6:00 p.m.

The Fair Association will not be responsible for loss or damage to exhibits or injury to persons.



Massachusetts State Grange

American Values. Hometown Roots.

THINGS THE JUDGES WILL LOOK FOR

Vegetables and Fruits

1. Exact number of specimens as called for on the premium list.
2. Uniformity – each specimen like every other in size, color, and shape.
3. Quality – not too large or small, fine texture, no blemishes.
4. Freedom from blemishes – no cuts, bruises, insect injury or disease.
5. Cleanliness – product washed or wiped as prepared for market.
6. Root crops must have a 1-inch top.
7. Tomatoes, ripe remove stems, green leave stems on.

Jelly

1. Clear and of good color and consistency.
2. Containers uniform, jelly jars, clean and labeled.
3. All canned and preserved goods, including jams and jellies, must be sealed by processing.

Canned goods

1. Products should be of the best quality, uniform in size and good color.
2. Liquid should be clear, free of sediment, and have the proper amount in the jar.
3. Containers uniform, pint size, clean and labeled.
4. All canned and preserved goods, including jams and jellies, must be sealed by processing.

Clothing and Home Furnishings

1. Condition of article.
2. Suitability of fabric and materials.
3. Construction and workmanship.
4. Originality and ease of care.

PLEASE PATRONIZE OUR ADVERTISERS AND DONORS WHO HAVE MADE THIS PREMIUM LIST POSSIBLE.

The members of Williamsburg Grange wish to thank the Massachusetts State Grange, the Massachusetts Department of Agricultural Resources, and all of the community members who work to make this Fair a success.

FRUIT EXHIBITS

All fruit must be **selected** and arranged by the exhibitor. (Fruits do not need to be grown by the exhibitor.)

Single Plates

Varieties to compete separately if 2 or more entries.

Premium: \$3 \$2 \$1

- | | |
|-----------------------------|---|
| 101. Apples, 5 | 107. Blueberries, pint box |
| 102. Peaches, 5 | 108. Watermelon, 2 |
| 103. Pears, 5 | 109. Muskmelon, 2 |
| 104. Grapes, 1 bunch | 110. Any other large fruit, 5 (name variety) |
| 105. Plums, 10 | 111. Any other small fruit, pint box (name variety) |
| 106. Blackberries, pint box | |

Displays

Judged: arrangement 30%, quality 50%, utility 10%, and no. of kinds 10%.

- | | |
|--|-------------|
| 150. Chopping Bowl, Basket, Tray, etc. Mixed fruit (6) or more kinds | \$5 \$3 \$2 |
| 151. Display of mixed fruit – not to exceed 3 feet by 2 ½ feet. | \$8 \$5 \$3 |
| 152. Collection of six fruits, any variety, by plate (5 specimens per plate) | \$5 \$3 \$2 |
| 153. Apples – half bushel – in commercial container | \$5 \$3 \$2 |
| 154. Display of 49 apples, same variety | \$5 \$3 \$2 |



Dove Business Associates, Inc.
Established 1985

In Memory Of
Founder & Father
Pete Cerreta

Services

- Taxes
- Bookkeeping
- Payroll

(413)268-9313
info@dovebusinessassociates.com
PO Box 555
11 Main Street
Williamsburg, MA 01096

Fast , Fair, Friendly
24 Hour Water Heater Replacement
Boilers, warm air furnace and gas piping

WATER HEATERS AMERICA INC.

413-485-4375 or 888-HOT-WATR
contact@waterheatersamericainc.com

Meekins
Your Community Library
Since 1897



Thank you Williamsburg Grange
for another year of great community contributions

413-268-7472
www.meekins-library.org

Strate Landscape Construction Co.



- Stone walls, terraces, walkways
- Plantings
- Water Gardens
- Arbors, Fences, Decks

Degree in Landscape Architecture
26 Years Experience

Joel D. Strate 1-413-268-3454

VEGETABLE EXHIBITS

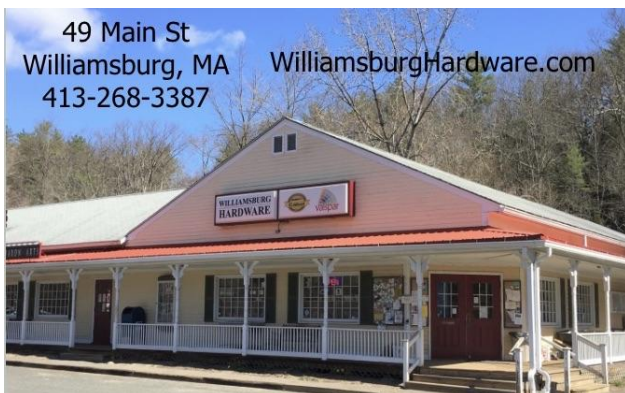
All vegetables **must be grown**, selected and arranged by the exhibitor. Root crops must have a 1-inch top. Tomatoes, ripe remove stems, green leave stems on.

Single Plates

Only one entry per family in #200 - #240 classes

Premiums: \$3 \$2 \$1

- | | |
|--------------------------------------|------------------------------------|
| 201. Lima Beans, 15 | 220. Peppers, banana 5 |
| 202. Shell beans, 15 | 221. Peppers, green, 5 |
| 203. Shelled beans, 1 pint | 222. Peppers, red, 5 |
| 204. Green beans, 15 | 223. Potatoes, red, 5 |
| 205. Yellow beans, 15 | 224. Potatoes, white, 5 |
| 206. Beets, 5 | 225. Pumpkins, pie, 2 |
| 207. Broccoli, 2 bunches | 226. Pumpkins, mini, 2 |
| 208. Cabbage, 2 heads | 227. Rutabaga, 2 |
| 209. Carrots, 5 | 228. Squash, summer green, 2 |
| 210. Cauliflower, 2 heads | 229. Squash, summer yellow, 2 |
| 211. Celery, 2 bunches | 230. Squash, winter, acorn, 2 |
| 212. Sweet Corn, 5 ears half- husked | 231. Squash, winter, butternut, 2 |
| 213. Cucumbers, 3 | 232. Squash, winter, hubbard, 2 |
| 214. Eggplant, 2 | 233. Sunflower, large only, 2 |
| 215. Garlic, 5 bulbs | 234. Tomatoes, green, 5 |
| 216. Lettuce, 2 heads | 235. Tomatoes, red, 5 |
| 217. Onions, 5 | 236. Tomatoes, cherry, 10 stems on |
| 218. Peas, snow, 15 pods | 237. Any other squash, 2 |
| 219. Peppers, hot 5 | 238. Any other worthy vegetable |

A logo for Pause & Pivot Farm, featuring a stylized green leaf inside a black outline of a leaf shape.

PAUSE & PIVOT
FARM

Hydroponically grown vegetables
Salvaged and antique wood products
Classes and events

Williamsburg, MA
www.pausepivotfarm.com

VEGETABLE DISPLAYS

Displays are judged on arrangements 30%, quality 50%, utility 10%, number of kinds 10%.

250.	Chopping bowl, basket, tray (5) five or more kinds	\$10 \$8 \$6
251.	Display of Farm Products, not to exceed 4 by 2 ½ feet.	\$15 \$10 \$8
252.	Display of vegetables not to exceed 2 by 2 ½ feet	\$10 \$8 \$6
253.	Potatoes – one peck in commercial container	\$5 \$3 \$2
254.	Silo Corn - five stalks	\$5 \$3 \$2
255.	Largest Pumpkin	\$5
260.	Sunflower – largest – only one	\$5
261.	Squash – largest winter – only one	\$5
262.	Decorated vegetables judged on imagination	\$3 \$2 \$1

CLUB EXHIBITS

270.	4H or Club exhibits not to exceed 4 by 2 ½ feet	\$10 \$8 \$6
271.	Conservation and Informational displays 3 by 2 ½ feet	\$8 \$5 \$3



Business card for Jeff Ovitt. The card is red with a white header area containing the 'JJ-son' logo. Below the logo, the name 'Jeff Ovitt' is printed in white. A thick black horizontal line separates the name from the phone number '413.575.1129'. At the bottom, the email 'jovitt@jmt-services.com' and address '11 Goshen Rd Williamsburg MA 01096' are listed in white.



Logo for Western Mass Heating, Cooling & Plumbing Inc. It features a red roof outline containing a blue snowflake, a yellow sun, and a grey faucet with a blue drop of water. Below the logo, the text 'WESTERN MASS' is written in large, bold, black letters, with a red house icon integrated into the letter 'A'. Underneath, 'HEATING, COOLING & PLUMBING INC.' is written in smaller black letters. The address '4 South Main St. Suite K Haydenville, MA' and website 'westernmassheatingcooling.com' are listed at the bottom.

Florence Bank®

CANNED GOODS

Must be in uniform, pint size, labeled containers and processed, including jam/jelly. Must be this year's production and made by the exhibitor. Prizes awarded on listed items only. One entry per family.

Fruits and Vegetables

2 pint jars each

Premiums: \$3 \$2 \$1

Fruits

- 301. Applesauce
- 302. Blackberries
- 303. Blueberries
- 304. Cherries
- 305. Fruit Salad
- 306. Peaches
- 307. Pears
- 308. Plums
- 309. Raspberries
- 310. Jam
- 311. Jelly
- 312. Juice (fruit)

Vegetables

- 320. Beans, shell
- 321. Beans, green
- 322. Beans, wax yellow
- 323. Beets
- 324. Carrots, cut
- 325. Carrots, whole
- 326. Greens
- 327. Peas
- 328. Sweet Corn
- 329. Tomatoes
- 330. Tomato juice
- 331. Pickles, dill
- 332. Pickles, bread & butter
- 333. Pickles, sweet
- 334. Relish

Collections

Premiums: \$5 \$3 \$2

- 340. Collection of three jars – 1 jar each of three kinds of fruit.
- 341. Collection of three jars – 1 jar each of three kinds of vegetables.
- 342. Collection of jam and /or jelly. – 3 jars.
- 343. Collection of pickles and/or relishes – 3 jars.

WILLIAMSBURG



ANIMAL CLINIC
LLC

Susan Zuroff, DVM
Dwight Baghdoyan, DVM

14 Goshen Road • Route 9
P.O. Box 777
Williamsburg, MA 01096
www.WilliamsburgAnimalClinic.com

413-268-7738

132 Main St
Haydenville, MA 01039
phone: 413-268-0000
text: 413-233-6894
e-mail:
lildoglodge@yahoo.com



LIL DOG
LODGE

DAIRY, MAPLE,
AND HONEY PRODUCTS

Premiums: \$3 \$2 \$1

Dairy

- 401. Egg, Chicken, brown, 1 dozen
- 402. Eggs, Chicken, white, 1 dozen
- 403. Eggs, Chicken, other, 1 dozen (children may exhibit a mixed dozen)
- 404. Eggs, Duck, 1 dozen
- 405. Milk, 1 quart glass container
- 406. Cream, 1 half pint glass container

Maple and Honey

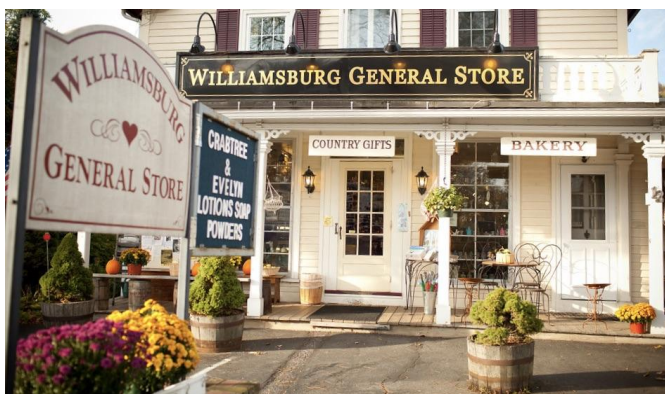
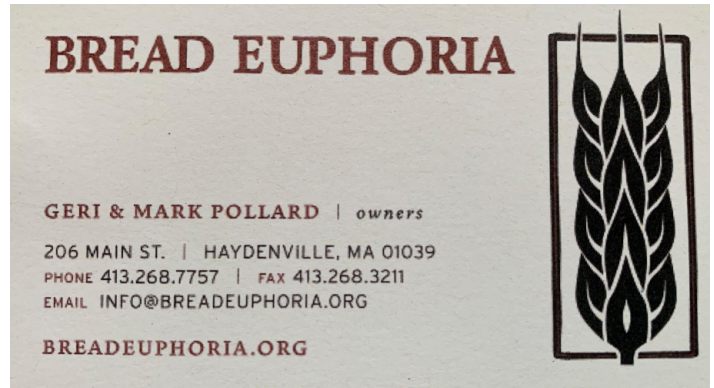
- 411. Maple syrup, 2 one pint glass containers
- 412. Maple sugar, cakes, 5
- 413. Maple sugar, soft, 1 pound
- 414. Maple sugar cream, 1 pound
- 421. Honey, 2 one-pint glass containers (strained)
- 422. Honey, with comb 2 one-pint glass containers

CAKE DECORATING

Decorated for artistic appearance, no recipe needed.

Premiums: \$5 \$3 \$2

- 550. Two Layer Cake
- 551. Flat Cake
- 552. Molded or Form Cake
- 553. Gingerbread House, decorated for artistic appearance, no recipe. However, it MUST be gingerbread.
- 554. Box Lunch – Child class only. Menu for the packed lunch must be attached, to show a nutritional meal. The lunch should not need to be refrigerated



**WILLIAMSBURG
MARKET**

*Fresh-cut Meats • Local and Organic Produce
Baked Goods • Beer and Wine
Full Assortment of Groceries
Take-home Meals From Our Kitchen*

Call us with special requests! 268-3006

HOME COOKED FOOD

Must be wrapped in plastic bags tied with a twist or zip-lock. A recipe must be attached. No packaged mixes.

Premiums : \$2 \$1.50 \$1 (unless noted otherwise)

- | | |
|---|--|
| <p>501. Quick bread, graham, wheat, etc.</p> <p>502. Quick bread, raisin, fruit, etc</p> <p>503. Yeast bread, white</p> <p>504. Yeast bread, dark</p> <p>505. Yeast bread, fancy</p> <p>506. Yeast Rolls, 6</p>
<p>507. Angel Cake</p>
<p>508. Sponge Cake</p> <p>509. Dark cake, frosted (no canned frosting)</p> <p>510. Light cake, frosted (no canned frosting)</p> <p>511. Coffee Cake</p> <p>512. Nut Cake</p> <p>513. Butternut Cake, frosted and decorated with butternuts. \$5 \$3 \$2</p> <p>514. Dropped cookies, chocolate chip, 6</p> <p>515. Dropped cookies, all other, 6</p> | <p>516. Rolled cookies, 6</p> <p>517. Bar cookies, 6</p> <p>518. No bake cookies, 6</p> <p>519. Fruit pie, two crust, not Apple</p> <p>520. Pie, two crust, Apple</p> <p>521. Pie, one crust, Custard</p> <p>522. Pie, one crust, soft walnut or pecan in Honor of Roger Bisbee. First Place wins a Pie Plate \$5 \$3 \$2</p> <p>523. Doughnuts, raised, 6</p> <p>524. Doughnuts, plain, 6</p> <p>525. Muffins, Blueberry, 6</p> <p>526. Muffins, other, 6</p> <p>527. Baking Powder Biscuits, 6</p> <p>528. Homemade Candy, 6 pieces at least 1" square (peanut brittle may be broken)</p> <p>529. Homemade Fudge, 6 pieces at least 1" square</p> <p>530. Fruit crisp</p> |
|---|--|



Done Right Chimney
Cory & Sabrina McGill
413-340-1399
**Call us to get it
DONE RIGHT!**

P.O. Box 1054
45 Main Street
Williamsburg, MA 01096
ContactDoneRight@gmail.com "Like" us on Facebook

**Schneider Plumbing
& Heating, Inc.**
(413) 268-0002
sph1634@yahoo.com

P.O. Box 323 Haydenville, MA 01039
Residential & Commercial Plumbing
New Installations, Service & Repair
Boilers, Furnaces, Gas Piping



PH: 413-268-3136

**Main Street
PACKAGE
STORE**

**35 Main Street
Williamsburg, MA 01096**

**FINE WINES LIQUORS
LOTTERY MICROBREWS**



O'Briens Auto Works

Todd O'Brien
Owner
23 Main St
Williamsburg, MA 01096

413-268-7066
obrienwill9@comcast.net

NEEDLECRAFT

Must be made by the exhibitor in the last 24 months. Must be labeled if machine knit.

Premiums: \$3 \$2 \$1 (unless noted otherwise)


Crochet

- 601. Afghan in **Honor of Candy Smith**
First Place wins special ribbon \$5 \$3 \$2
- 602. Baby afghan **\$5 \$3 \$2**
- 603. Tablecloth, bedspreads, cotton **\$5 \$3 \$2**
- 604. Centerpieces, table runner, set of 4 place-mats
- 605. Adult garment
- 606. Children's garment
- 607. Mittens or gloves
- 608. Hat
- 609. Decorative Doily
- 610. Scarf
- 611. Toy
- 612. Doll clothes
- 613. Sweater set, baby, 2+ (includes hat, booties or blanket)
- 614. Novelty booties
- 615. dishcloths/potholders
- 616. Any Other

Knit

- 620. Afghans **\$5 \$3 \$2**
- 621. Baby afghan **\$5 \$3 \$2**
- 622. Sweater, Adult **\$5 \$3 \$2**
- 623. Children's garment
- 624. Mittens or gloves
- 625. Hat
- 626. Socks
- 627. Toy
- 628. Sweater set, baby, 2+ pieces (includes hat, booties or blanket)
- 629. Novelty booties
- 630. Scarf
- 631. Any Other

Folktography by Tom
high quality prints & photography products
featuring nature and humans and everything else



Folktography.zenfolio.com
folktography@reelifeproductions.com
413.575.9707, Williamsburg, MA



Mountain River Taiko

Community Japanese Drumming Group
Performances & workshops
A registered 501(c)3 nonprofit

info@mountainrivertaiko.com



Est. 2011



NEEDLECRAFT

Must be made by the exhibitor in the last 24 months.

Premiums: \$3 \$2 \$1 (unless noted otherwise)

Embroidery (Hand work only)

- 640. Crewel (wool)
- 641. Luncheon set or 3 bibs
- 642. Pillowcases
- 643. Counted Cross Stitch
- 644. Stamped Cross Stitch
- 645. Plastic Canvas, fancy
- 646. Plastic Canvas, tissue box/ toilet paper covers
- 647. Any other

Weaving

- 650. Hand Weaving
- 651. Loom Weaving

Home Sewing

- 680. Apron
- 681. Dress
- 682. Child's Dress
- 683. Pajamas or nightgown
- 684. Blouse or Shirt
- 685. Sportswear
- 686. Coat or Jacket
- 687. Suit
- 688. Skirt, long or short
- 689. Formal Wear
- 690. Accessory – pocketbook
- 691. Novelty
- 692. Toy
- 693. Upcycled Sewing Project

Quilts

- 660. Appliquéd \$5 \$3 \$2
- 661. Pieced \$5 \$3 \$2
- 662. Novelty \$5 \$3 \$2
- 663. Wall Hanging \$5 \$3 \$2
- 664. Runner \$5 \$3 \$2
- 665. Machine Quilted \$5 \$3 \$2
- 666. Tied \$5 \$3 \$2
- 667. Hand quilted \$5 \$3 \$2
- 668. Vest
- 669. Pocketbook



In Memory of
Departed Family
Grange Members

~ Donna (Bickford),
Corky and Mark
Baldwin

ARTS AND CRAFTS

Must be made by the exhibitor in the last 12 months.

Premiums: \$2 \$1.50 \$1

- | | |
|---|--|
| 701. Wood craft | 710. Pottery |
| 702. Pen or pencil drawing, framed and ready to be hung (except for children) | 711. Carving (soap, wood, etc.) |
| 703. Painting, framed | 712. Plastic lacing (gimp) item |
| 704. Ceramics (pre-molded) | 713. Beaded item |
| 705. Ceramics (hand thrown) clay | 714. Basketry |
| 706. White-ware painted | 715. Collage on firm paper – Child class only |
| 707. Stencil painting on wood or tin | 716. Lego creation, must be portable -- Child class only. |
| 708. Fabric Painting | 717. Birdhouse, butterfly house, bat house |
| 709. Tie Dye, clothing | 718. Stained Glass |
| | 719. Cut Paper |

PHOTOGRAPHY

Must be 5x7 minimum, framed

Premiums: \$3 \$2 \$1

- | | |
|--------------|--|
| 730. Scenery | 734. The Williamsburg Grange Fair/function |
| 731. People | 735. Computer enhanced |
| 732. Animals | 736. Special Effects (Time Lapse, Fish Eye, etc) |
| 733. Flowers | 737. Any other worthy subject |



Panda Garden
CHINESE RESTAURANT

49 Main Street
Williamsburg, MA 01096

Tel. (413) 268-8811
(413) 268-8812
Fax: (413) 268-2192

OPEN HOURS:
M – Th 11:00am – 9:00pm
F – Sa: 11:00am – 9:30pm
Su: 12:00noon – 9:00pm
www.PandaWilliamsburg.com



OLIVER'S FARM STAND

36 Main Street
Goshen, MA 01032
Oliversfarmstand.com

WILBUR M. PURRINGTON MEMORIAL FLOWER SHOW

Flower Specimens

All must be grown by the exhibitor. Foliage will be taken into consideration.
Judging is based solely on quality.

Premiums: \$2 \$1.50 \$1

- | | |
|---|---|
| 801. Asters, 5 stems | 814. Petunias, double, 5 stems |
| 802. Bachelor Buttons, 5 stems | 815. Rose, single bud, name variety, 1 |
| 803. Calendula, 5 stems | 816. Roses, 3 varieties, 3 stems |
| 804. Cosmos, 5 stems | 817. Roses, 3 buds of same variety, 3 stems |
| 805. Chrysanthemums, 5 stems | 818. Zinnias, large, 5 stems |
| 806. Dahlia, 1 giant | 819. Zinnias, small, 5 stems |
| 807. Dahlia, 5 small | 820. Snapdragons, 5 stems |
| 808. Marigold, small single, 5 stems | 821. Gladioli, one variety, 3 spikes |
| 809. Marigold, small double, 5 stems | 822. Gladioli, mixed colors, 5 spikes* |
| 810. Marigold, large double, (pom-pom), 5 stems | 823. Any other flower, annual (not mixed), 5 stems |
| 811. Nasturtiums, 10 stems | 824. Any other flower, perennial (not mixed), 5 stems |
| 812. Pansies, 5 stems | 825. Sunflowers, ornamental, 3 stems |
| 813. Petunia, single. 5 stems | |

House Plants

May not have been purchased within the last year.

Premiums: \$3 \$2 \$1

- 840. African Violet, single
- 841. African Violet, double
- 842. Foliage Plant, (fern, ivy)
- 843. Flowering Plant – In bloom
- 844. Cactus



Arrangements:

Flowers must be selected and arranged, but need not be grown by the exhibitor. Must be fresh unless otherwise stated. No accessories except where stated. Foliage will be considered.

Arrangements are judged on arrangement 50%, choice of container 25%, quality of flowers 25%

Premiums: \$4 \$3 \$2

- 850. Two colors of flowers in a container not originally for flowers
- 851. Dried flowers
- 852. For Table – to be seen from all sides not to exceed 11” high
- 853. Representing a Holiday – accessories permitted
- 854. Humorous – Accessories permitted
- 855. In Metal container
- 856. Composition using weathered wood with at least one accessory
- 857. White flowers in white container
- 858. Yellow and Orange flowers in brown container
- 859. Wild flowers and/or foliage and fruit, at least 5 named varieties
- 860. In cup and saucer
- 861. In a basket
- 862. Grange Awareness, yellow and blue flowers, accessories permitted
- 863. Jean’s Special, must contain one perfect rose in arrangement
- 864. Miniature, not to exceed 4” in any direction.
- 865. Tray Garden (14 x 18) maximum, mosses and fungi, accessories permitted
- 866. Wreath –(laurel, or evergreen, fresh) – accessories permitted



PLEASE MAKE OUT CARDS FOR ENTRIES BEFORE COMING TO THE FAIR.

— Use a 3x5 card PLEASE FOLD IN HALF

Inside of Card

<p>LEAVE BLANK FOR AWARD</p>	<p>(EXAMPLE)</p> <p>CLASS #101 FRUIT APPLES</p> <p>NAME ADDRESS (must be filled out to receive award. please write legibly)</p>
---	---

Outside of Card

	<p>(EXAMPLE)</p> <p>CLASS #101 FRUIT APPLES</p>
--	---